



CREATAS  
INTERNATIONAL

BUILT TO MAKE A  
STYLE STATEMENT



**SALT & PEPPER COLLECTION**  
FULL BODY VITRIFIED TILES  
300X300MM (MATT)



# SALT & PEPPER

## COLLECTION

Explore the magnificent full body tiles of this collection that has matt finish and also has range of shades. It comes in 300x300mm size and also different thickness options with fascinating designs.

**300X  
300MM**



**FULLBODY  
VITRIFIED  
TILES**



3

2

1

AVAILABLE THICKNESS:

**1**      **2**      **3**  
**12mm**   **10mm**   **8mm**

We offer surfaces with three distinctive thickness that suits diverse space. It shows its strength and durability that will make us perfect choice for every needs.

## INDEX

**ERMANE  
WHITE**

**ODEL  
SAND**

**SILVER  
GREY**

**LASEN  
GRAPHITE**

**MIST  
GREY**

**AREO  
GREY**

**CEMENT  
GREY**

**ANTIQUE  
GREY**

**MASHROOM  
CREAM**

## APPLICATION



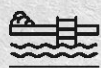
**Flooring Heavy  
Traffic Area**



**Indoor**



**Outdoor**



**Swimming  
Pools Decks**



**Garden &  
Corridors**



**Step &  
Riser**



**Kitchen  
Areas**



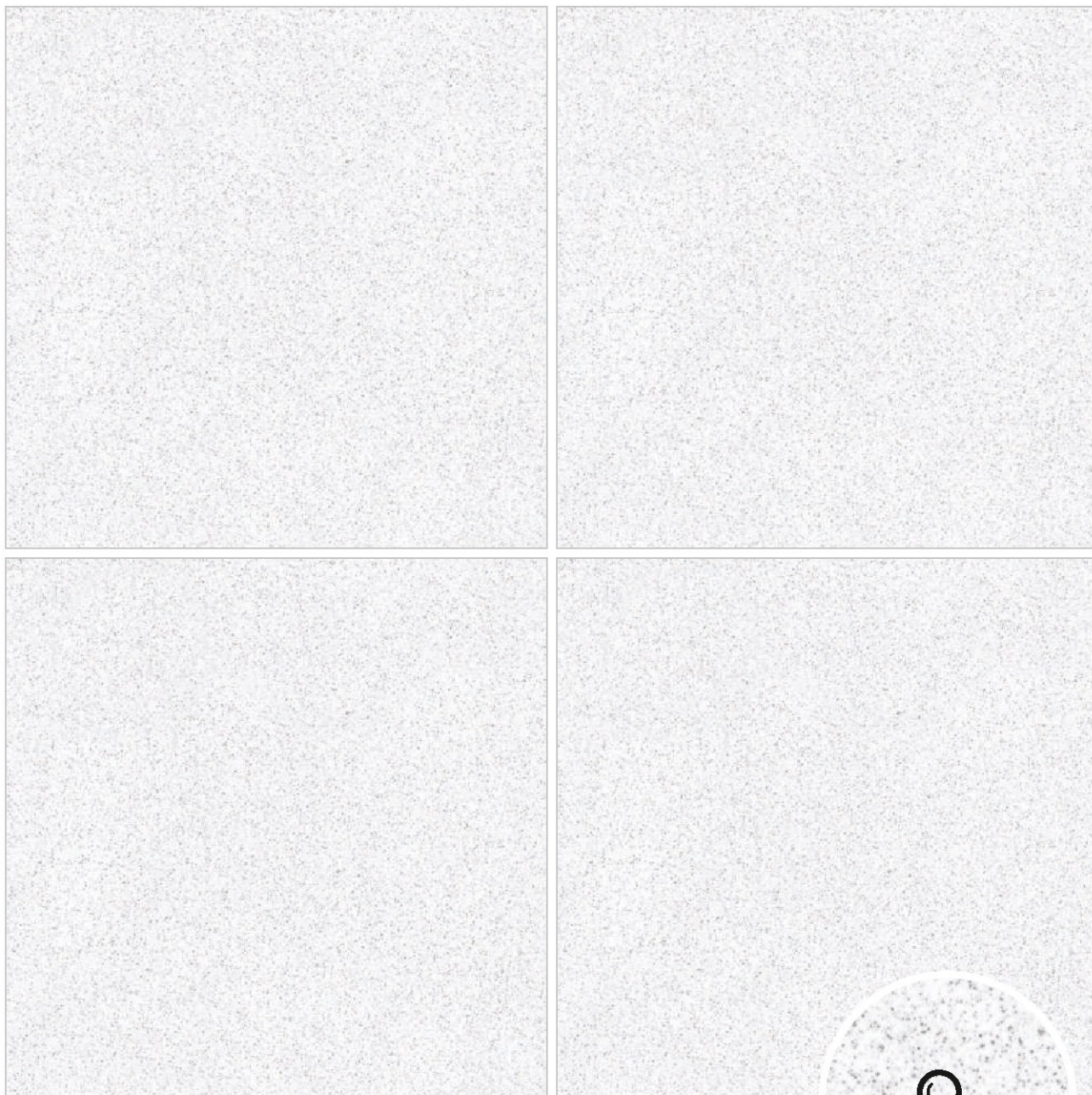
**Living  
Area**

# SALT & PEPPER

COLLECTION

FULLBODY  
VITRIFIED  
TILES

## ERMANE WHITE



SIZE:  
**300x300mm**

THICKNESS:  
**8mm | 10mm | 12mm**

SURFACE  
**MATT**

TEXTURE  
**PLAIN**



**ERMANE  
WHITE**

---

# SALT & PEPPER

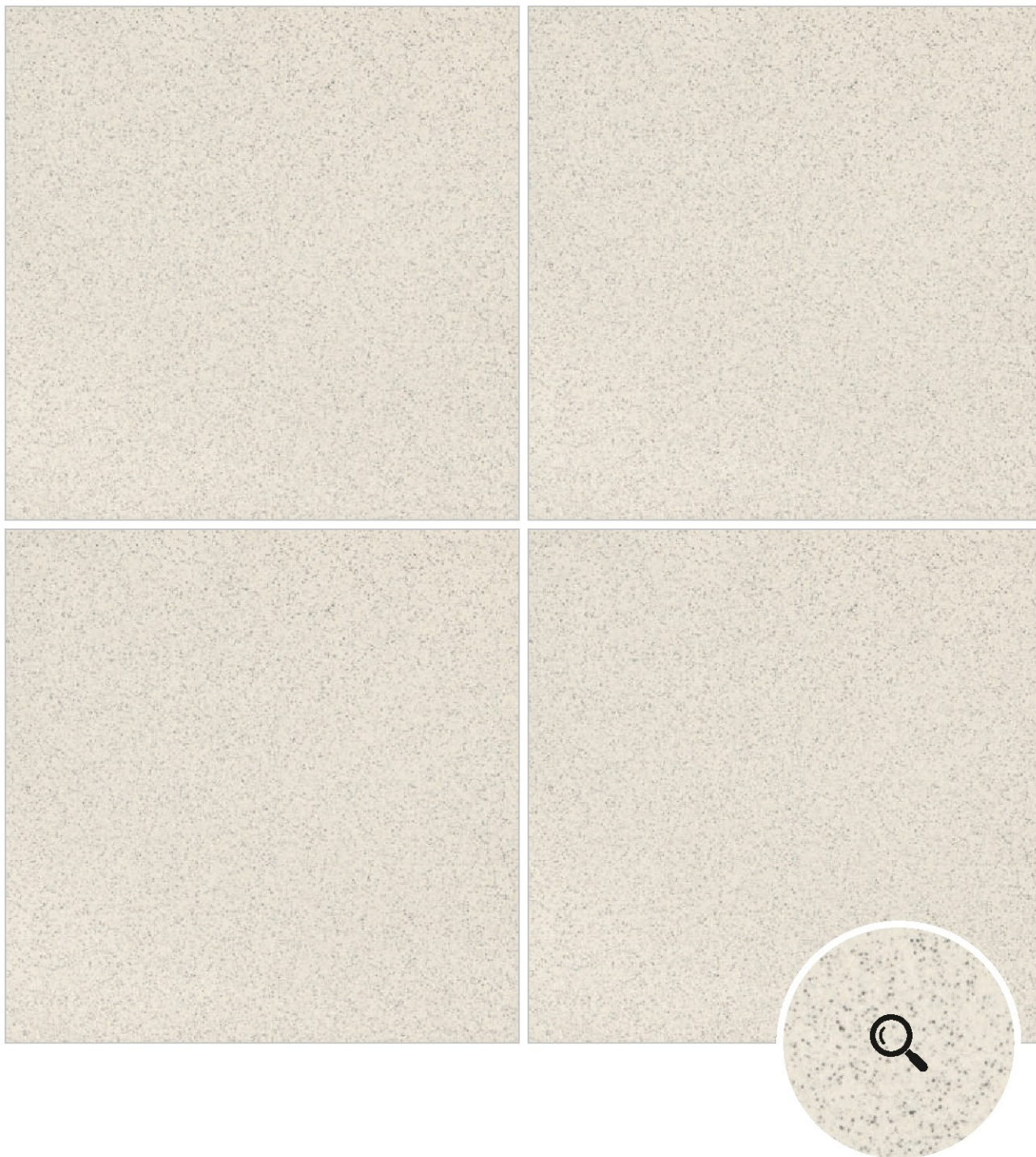
COLLECTION

---

FULLBODY  
VITRIFIED  
TILES

## ODEL SAND

---



SIZE:  
**300x300mm**

THICKNESS:  
**8mm | 10mm | 12mm**

SURFACE  
**MATT**

TEXTURE  
**PLAIN**

---



**ODEL  
SAND**

# SALT & PEPPER

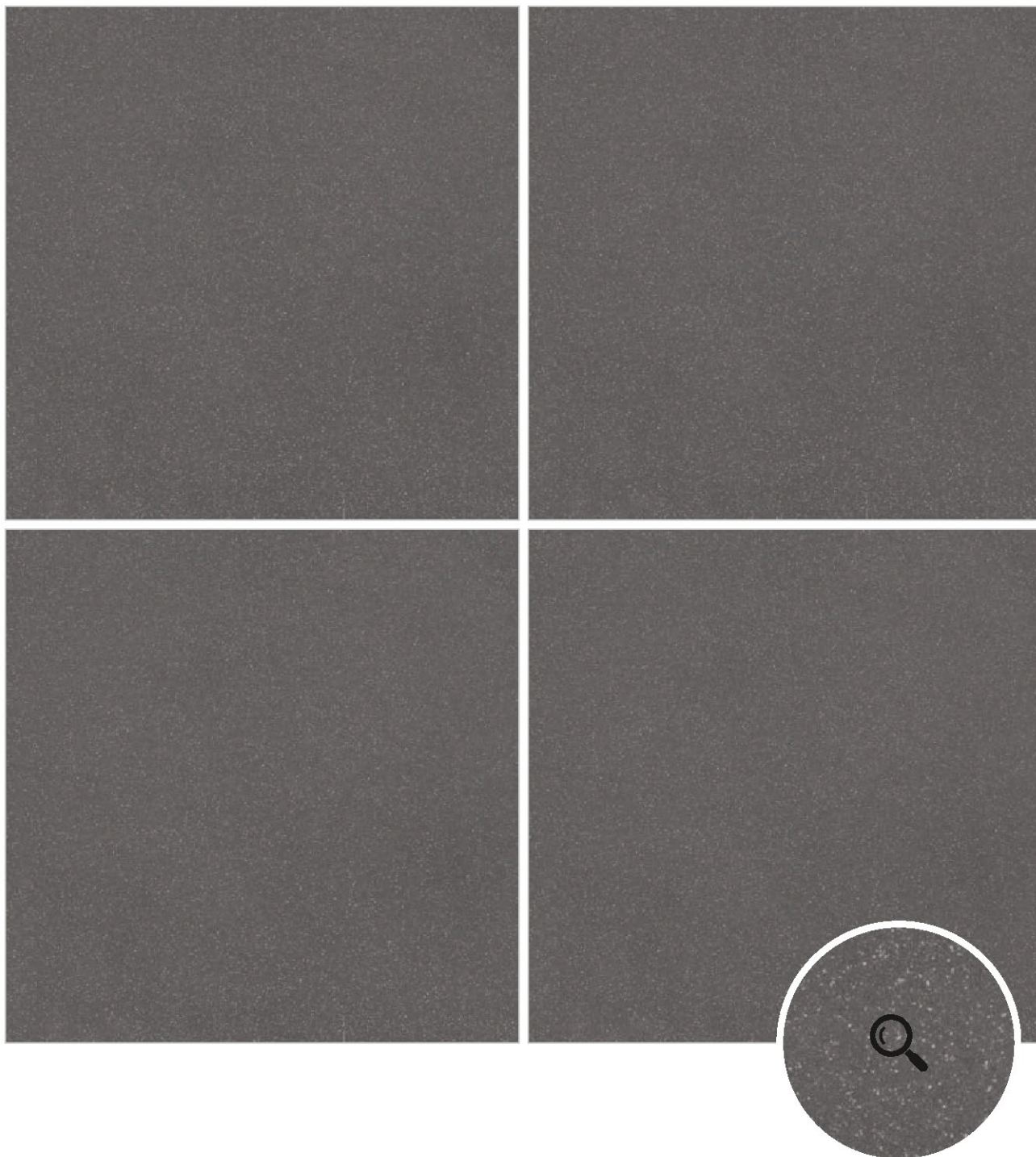
COLLECTION

---

FULLBODY  
VITRIFIED  
TILES

## LASEN GRAPHITE

---



SIZE:  
**300x300mm**

THICKNESS:  
**8mm | 10mm | 12mm**

SURFACE  
**MATT**

TEXTURE  
**PLAIN**

---



**LASEN**  
**GRAPHITE**

# SALT & PEPPER

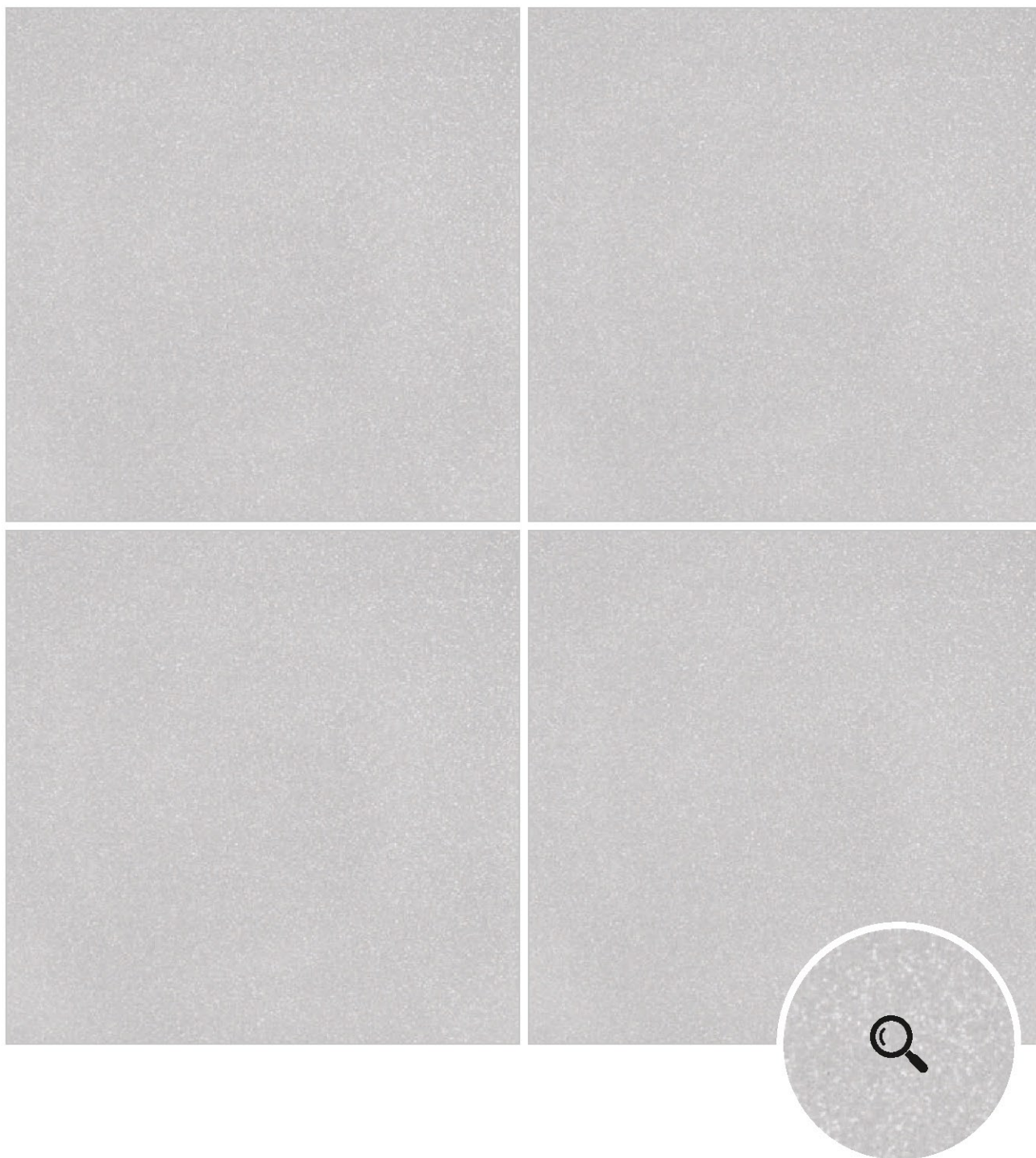
COLLECTION

---

FULLBODY  
VITRIFIED  
TILES

## SILVER GREY

---



SIZE:  
**300x300mm**

THICKNESS:  
**8mm | 10mm | 12mm**

SURFACE  
**MATT**

TEXTURE  
**PLAIN**

---



**SILVER  
GREY**

# SALT & PEPPER

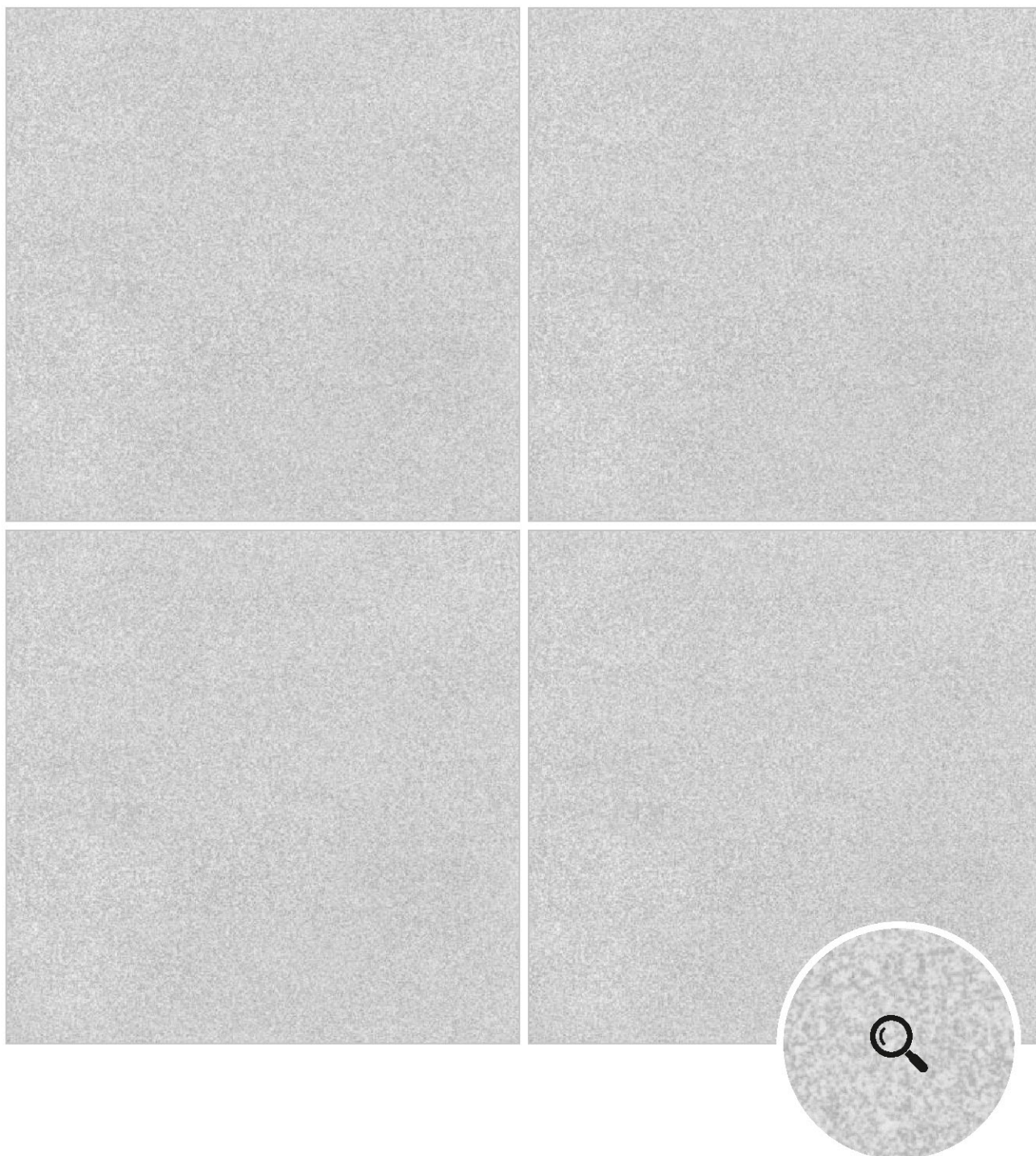
COLLECTION

---

FULLBODY  
VITRIFIED  
TILES

## MIST GREY

---



SIZE:  
**300x300mm**

THICKNESS:  
**8mm | 10mm | 12mm**

SURFACE  
**MATT**

TEXTURE  
**PLAIN**

---



**MIST  
GREY**

# SALT & PEPPER

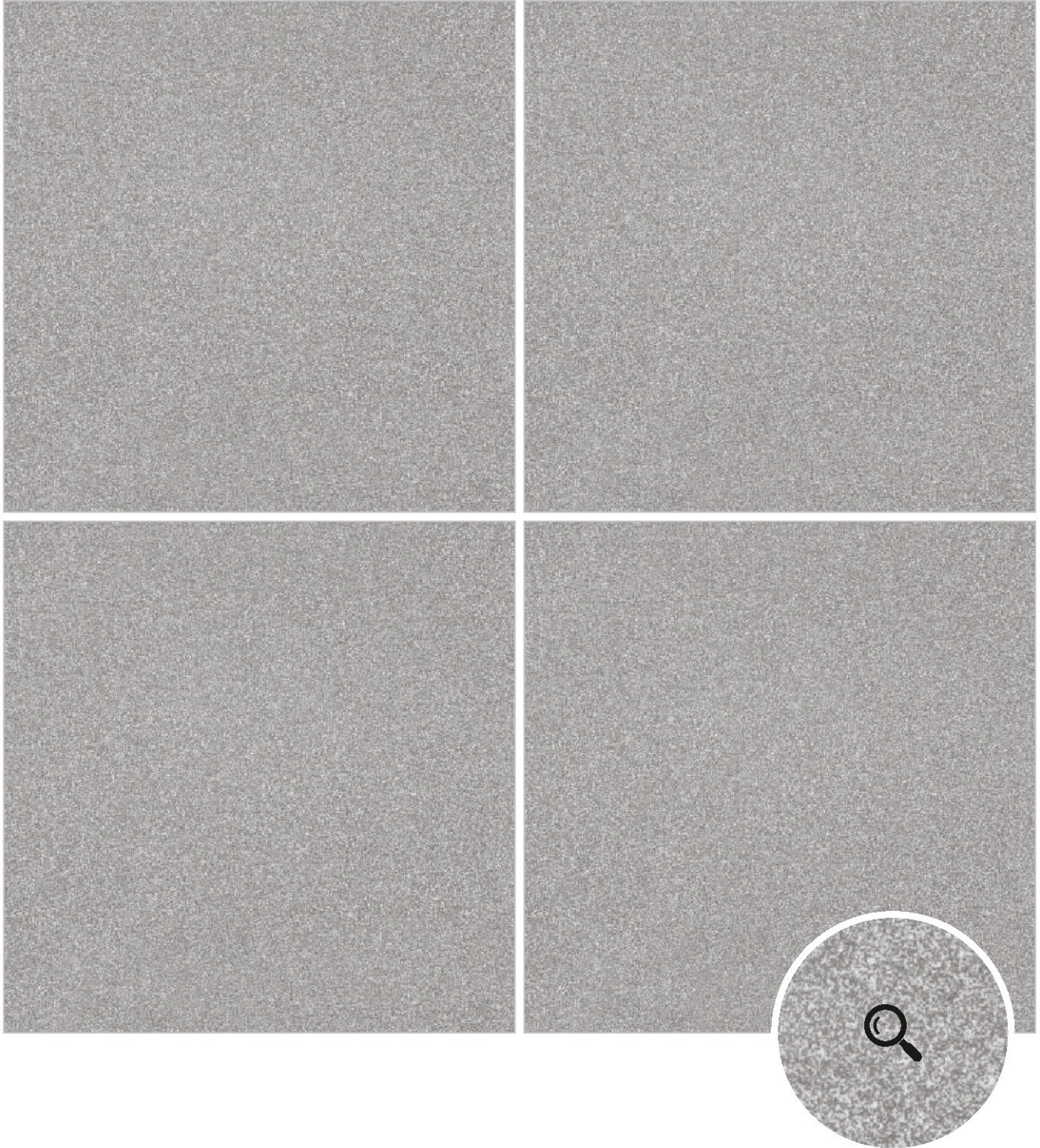
COLLECTION

---

FULLBODY  
VITRIFIED  
TILES

## AREO GREY

---



---

SIZE: **300x300mm** | THICKNESS: **8mm | 10mm | 12mm** | SURFACE **MATT** | TEXTURE **PLAIN**

---

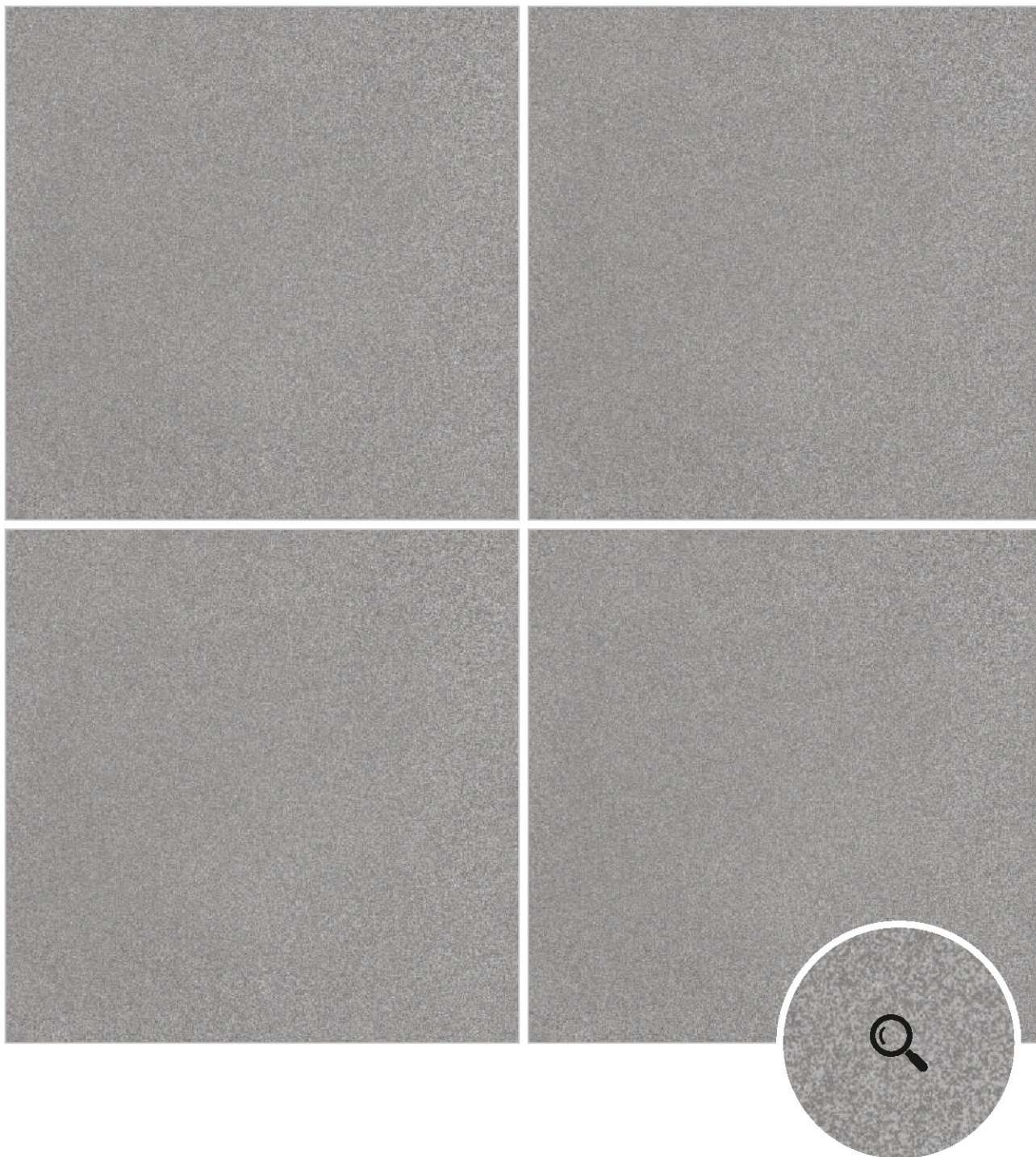


# SALT & PEPPER

COLLECTION

FULLBODY  
VITRIFIED  
TILES

## CEMENT GREY



SIZE:  
**300x300mm**

THICKNESS:  
**8mm | 10mm | 12mm**

SURFACE  
**MATT**

TEXTURE  
**PLAIN**



**CEMENT  
GREY**

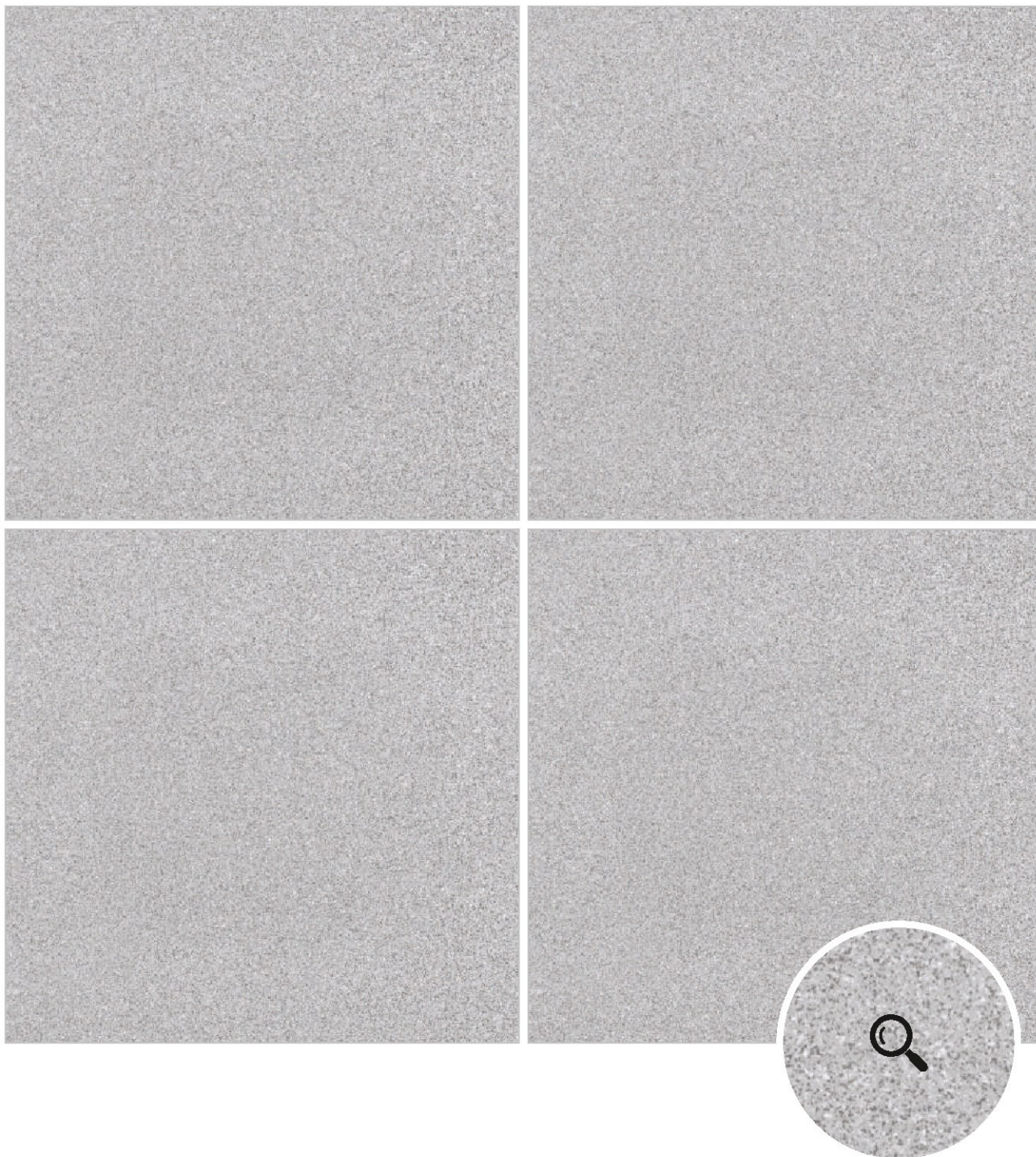
---

# SALT & PEPPER

COLLECTION

FULLBODY  
VITRIFIED  
TILES

## ANTIQUE GREY



SIZE:  
**300x300mm**

THICKNESS:  
**8mm | 10mm | 12mm**

SURFACE  
**MATT**

TEXTURE  
**PLAIN**



**ANTIQUE  
GREY**

---

# SALT & PEPPER

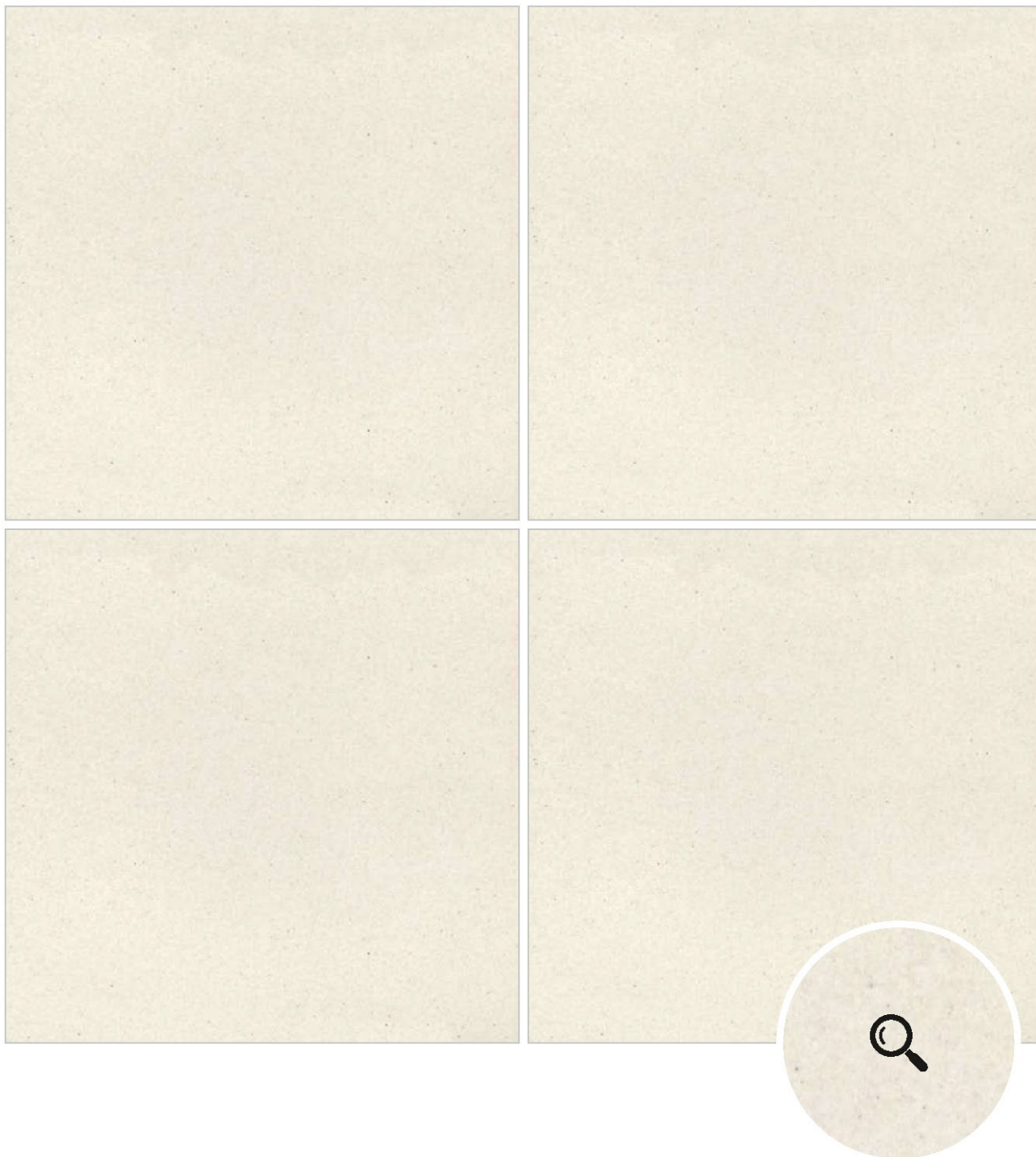
COLLECTION

---

FULLBODY  
VITRIFIED  
TILES

## MASHROOM CREAM

---



---

SIZE: **300x300mm** | THICKNESS: **8mm | 10mm | 12mm** | SURFACE **MATT** | TEXTURE **PLAIN**

---



**MASHROOM  
CREAM**

---

# CHARACTERISTICS OF FULLBODY VITRIFIED TILES

TECHNICAL DETAILS	STANDARD AS PER ISO-13006/EN176 GROUP B1A	MEAN VALUE OF FULL BODY VITRIFIED TILES	METHOD OF TEST
Deviation in Length & Width	± 0.60%	± 0.10%	ISO-10545-2
Deviation in Thickness	+ 5.00%	+ 2.00%	ISO-10545-2
Straghtness of Sides	± 0.50%	± 0.10%	ISO-10545-2
Rectangularity	± 0.60%	± 0.10%	ISO-10545-2
Surface Flatness	± 0.50%	± 0.10%	ISO-10545-2
Water Absorption	≤ 0.50%	≤ 0.03%	ISO-10545-3
Breaking Strength	1300N	2000N	ISO-10545-4
Abrasion Resistance	Max. 175mm	Max. 145mm <sup>3</sup>	ISO-10545-6
Moh's Hardness	Min. 6	≥6*	En101
Frost Resistance	Frost Proof	Frost Proof	ISO-10545-12
Thermal Shock	No Damage	No Damage	ISO-10545-9
Moisture Expansion	Nil	Nil	ISO-10545-10
Thermal Expansion	<9x10 <sup>-6</sup>	<6x10 <sup>-6</sup>	ISO-10545-8
Resistance of House Hold Chemical	No Damage	No Damage	ISO-10545-13
Stain Resistance	Resistance	Resistance	ISO-10545-14
Slip Resistance	>0.40	>0.40	ISO-10545-17

## PACKAGING DETAILS

SIZE	THICKNESS	PIECES/BOX	SQM./BOX	SQFT./BOX	KG/BOX
300X300MM (12"X12")	8.00MM	09	0.81	8.72	14.00
300X300MM (12"X12")	10.00MM	07	0.63	6.78	14.00
300X300MM (12"X12")	12.00MM	06	0.54	5.81	14.00

## SIZE RANGE

### 100X100MM [PAVERS - 12MM]



### 200X200MM [NON RECTIFIED]



#### Note :

- Size / shade variation is inherent in porcelain tiles , in case of any complain its should be brought to our dealer's notice before laying the tiles.
- Colour shown are indicative only. Check actual tiles for exact colour.
- The information contained in this catalogue are accurate as possible, but cannot be considered as legally binding.
- Customers are advised to inspect a sample of the tile before ordering.
- The company reserves the right to change the specifications without prior notice.

## TILE FIXING INSTRUCTIONS

It is necessary to use an appropriate adhesive and grouting material for each product An initial approach must be made before starting the installation and take into account the type of joint, structural, perimeter, expansion and installation that must be used for each use. We advise that to obtain an optimal result a 1.5 mm joint should be used

Once the placement is finished: it is recommended to remove the remains of adhesive material and specific grouting for each material, following the manufacturer's instructions for these products.

In general, powder detergents and aggressive scouring pads should not be used for cleaning. It is enough to clean the tiles with a sponge, warm water and a neutral liquid soap. Finally, rinse with clean water.



**CREATAS**  
**INTERNATIONAL**

**Email : [exports@creatasint.com](mailto:exports@creatasint.com)**

**Contact No : +91 9607777877**

**Web : [www.creatasint.com](http://www.creatasint.com)**